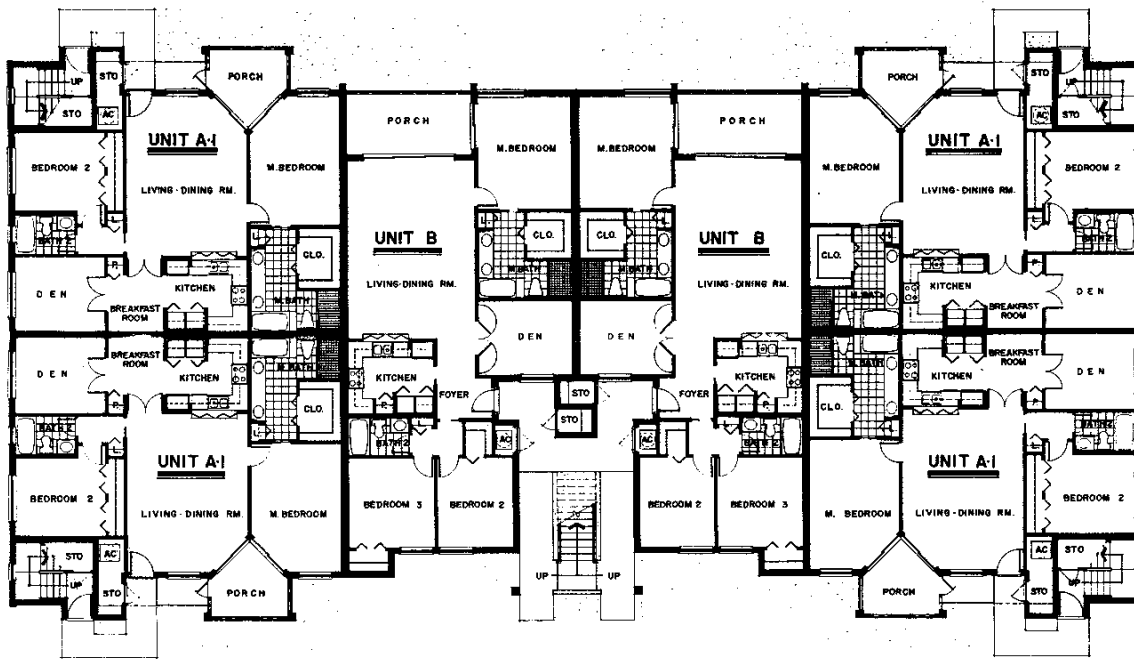
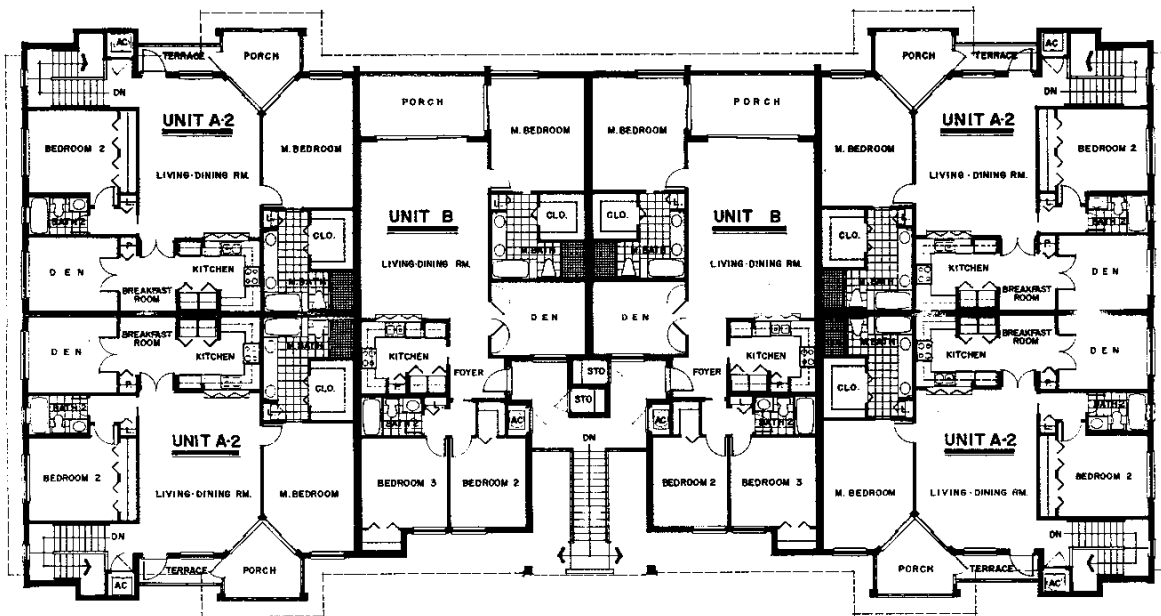


Typical First Floor Plan



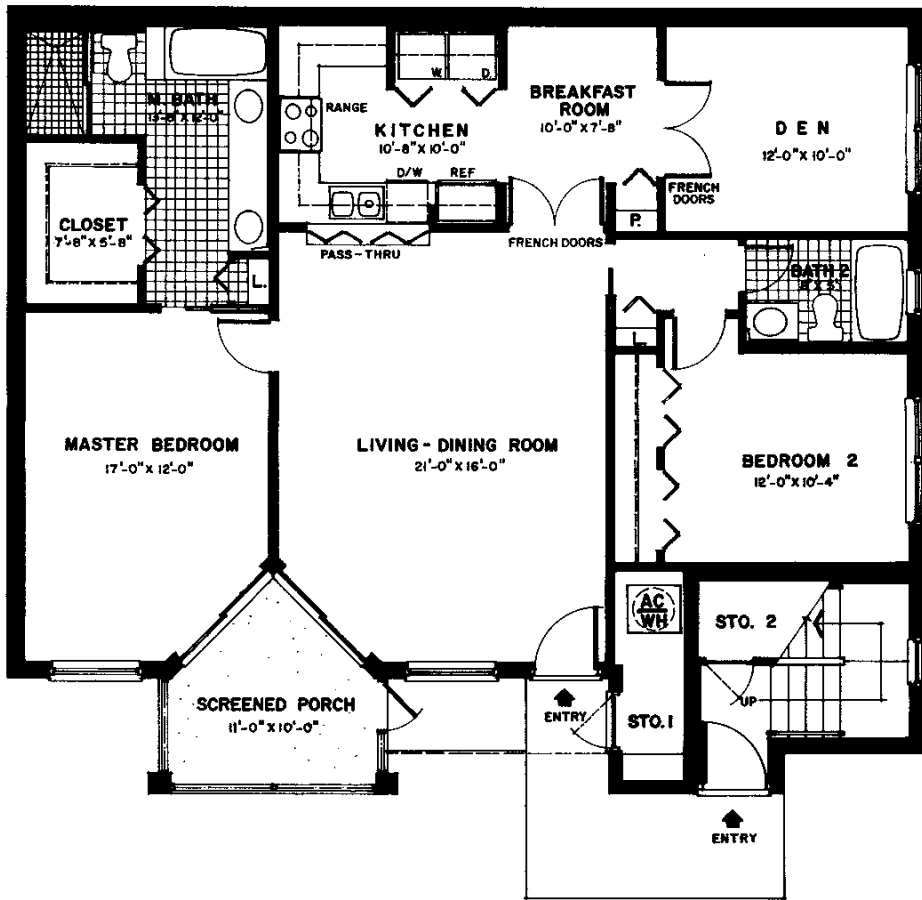
*AIR CONDITIONED SQUARE FOOTAGE IS COMPILED IN THE FOLLOWING MANNER: FROM OUTSIDE OF THE OUTSIDE WALL TO HALF THE INTERIOR COMMON WALL, INCLUDING THE UTILITY CLOSET CONTAINING THE AIR CONDITIONER AND WATER HEATER.

Typical Second Floor Plan



*AIR CONDITIONED SQUARE FOOTAGE IS COMPILED IN THE FOLLOWING MANNER: FROM OUTSIDE OF THE OUTSIDE WALL TO HALF THE INTERIOR COMMON WALL, INCLUDING THE UTILITY CLOSET CONTAINING THE AIR CONDITIONER AND WATER HEATER.

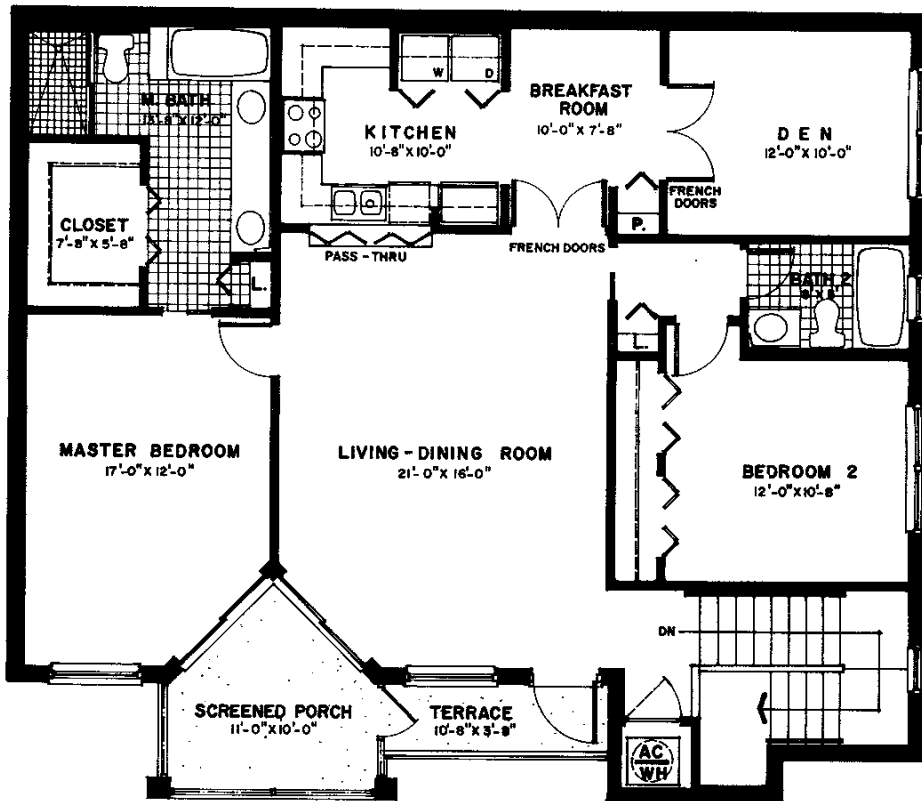
Unit A1-Lower Level



Living Area	1306 Sq. Ft.
Screened Porch	85 Sq. Ft.
Storage and AC Room	41 Sq. Ft.
Total	1432 Sq. Ft.

*AIR CONDITIONED SQUARE FOOTAGE IS COMPILED IN THE FOLLOWING MANNER: FROM OUTSIDE OF THE OUTSIDE WALL TO HALF THE INTERIOR COMMON WALL, INCLUDING THE UTILITY CLOSET CONTAINING THE AIR CONDITIONER AND WATER HEATER.

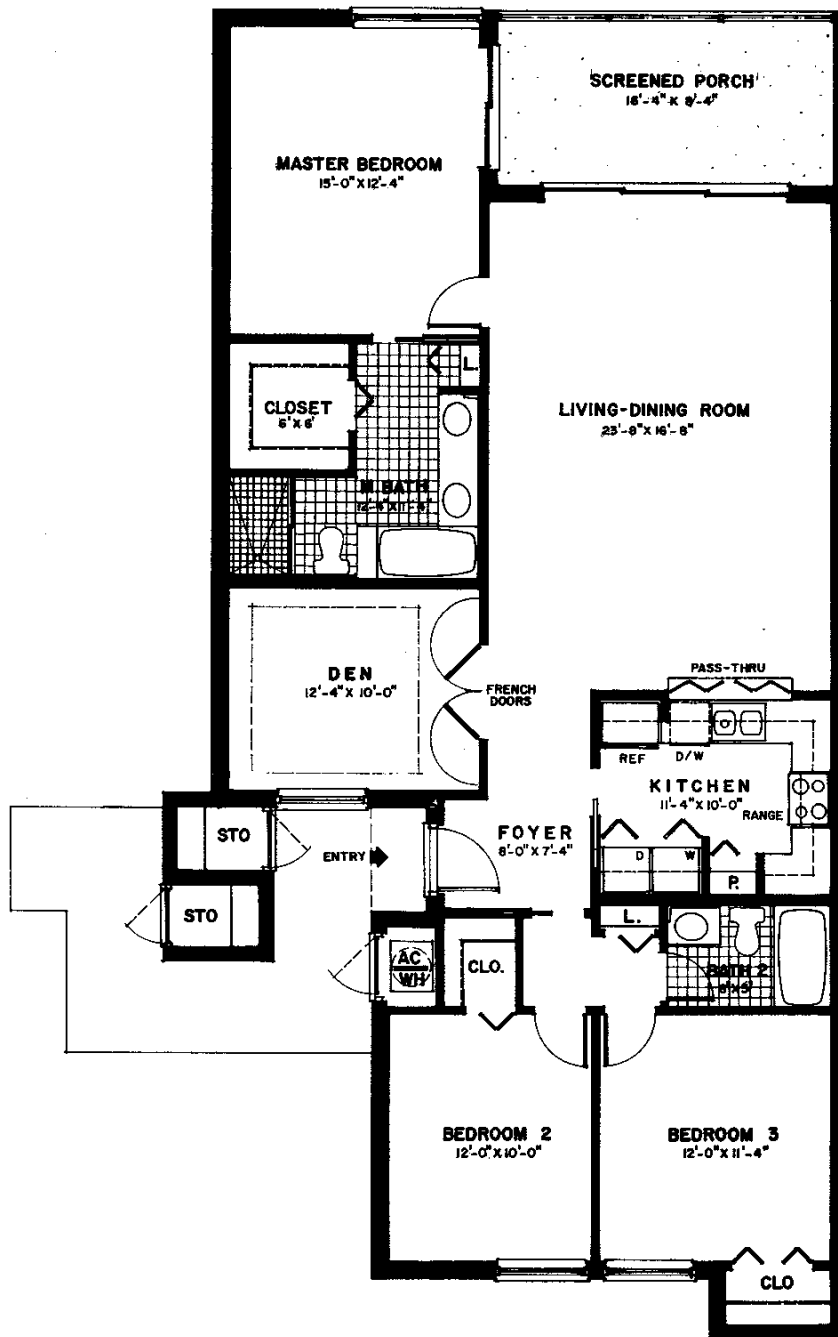
Unit A2-Upper Level



Living Area	1423 Sq. Ft.
Porch & Terrace	122 Sq. Ft.
AC Room	18 Sq. Ft.
Total	1563 Sq. Ft.

*AIR CONDITIONED SQUARE FOOTAGE IS COMPILED IN THE FOLLOWING MANNER: FROM OUTSIDE OF THE OUTSIDE WALL TO HALF THE INTERIOR COMMON WALL, INCLUDING THE UTILITY CLOSET CONTAINING THE AIR CONDITIONER AND WATER HEATER.

Unit B-Lower Level



Living Area	1506 Sq. Ft.
Porch	133 Sq. Ft.
Storage and AC Room	36 Sq. Ft.
Total	1675 Sq. Ft.

*AIR CONDITIONED SQUARE FOOTAGE IS COMPILED IN THE FOLLOWING MANNER: FROM OUTSIDE OF THE OUTSIDE WALL TO HALF THE INTERIOR COMMON WALL, INCLUDING THE UTILITY CLOSET CONTAINING THE AIR CONDITIONER AND WATER HEATER