

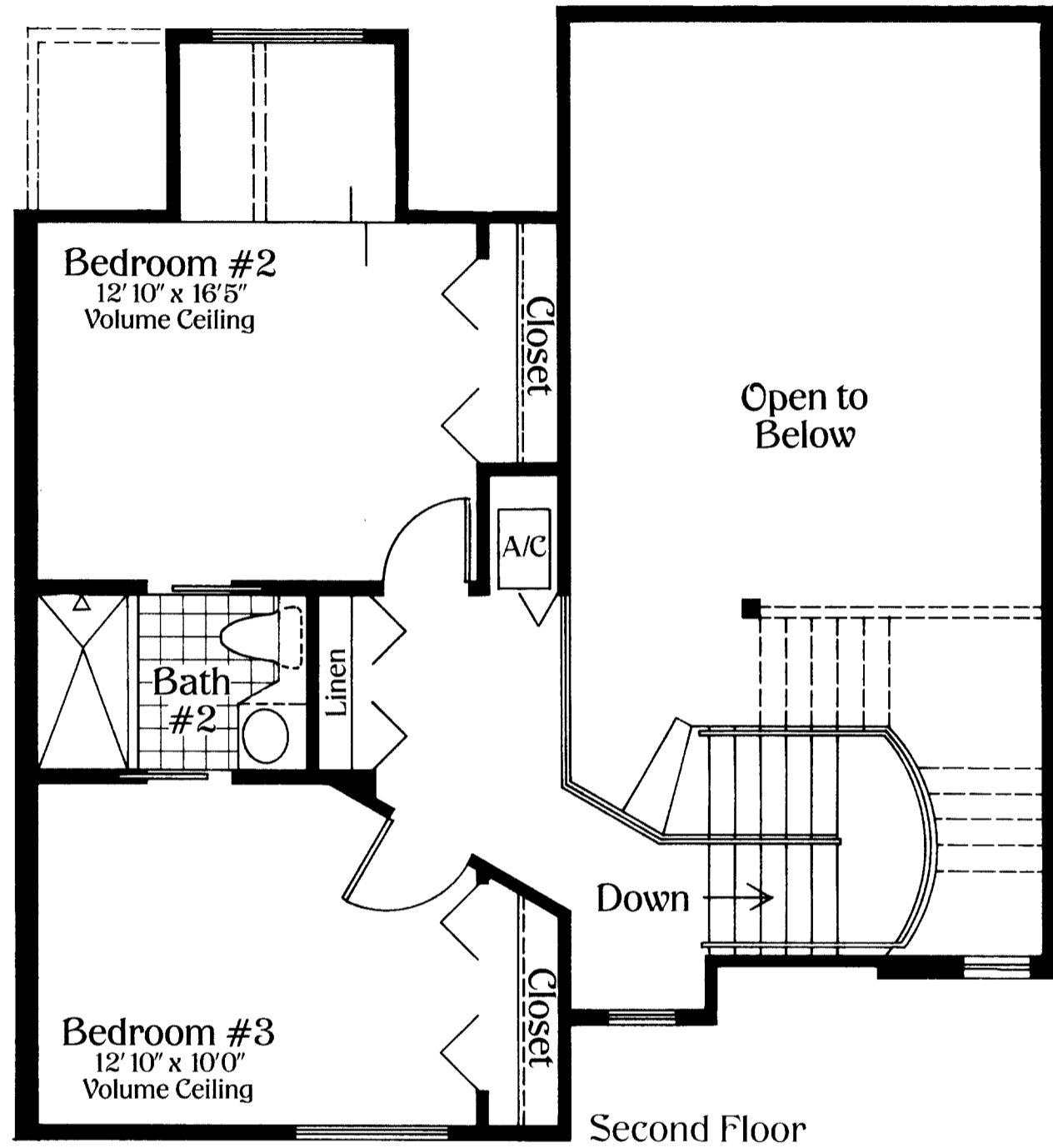
The luxury behind the legend.

Your Avalon Home

- Private courtyard entry.
- Unique blend of traditional and contemporary design in stylish Mediterranean architecture.
- Foyer with glazed 8" ceramic tile.
- Large, light-filled eat-in kitchen.
- Beautiful Spanish "S" clay tile roof.
- Dramatic volume ceilings (top floors in most areas).
- Utility room with basin and full-size large capacity Whirlpool washer and dryer.
- Crown molding in living room and dining area.
- Plant shelves.
- Handsome entry door with security viewer.
- Interior six-panel doors.
- Large screened Lanai for indoor-outdoor living and entertaining.
- Oversized walk-in closet in Master Suite.
- Full length mirrored closet doors in Master Suite.
- Textured walls in living and bedroom areas with smooth coat walls in bathrooms and kitchen.
- Marble window sills.
- Anodized sliding glass doors and windows.
- Lush carpeting in choice of decorator colors.
- Colonial baseboards.
- Pre-wired cable TV and telephone outlets.
- Pre-wired ceiling fan outlets in bedrooms and living room.
- Sturdy, solid lifetime concrete block and frame construction.
- Durable low maintenance stucco.

Your kitchen

- Beautiful, easy-care ceramic 8x8 tile floor.
- Complete energy efficient Whirlpool appliances:
Side by side refrigerator with ice maker
Self cleaning range
Microwave oven
Dishwasher
Disposal
- Space-saving appliance garage.
- Expansive pantry.
- Menu planning center.
- Porcelain sink with sprayer.
- Custom crafted European cabinetry.
- Convenient pass-through to dining room.



Your bath

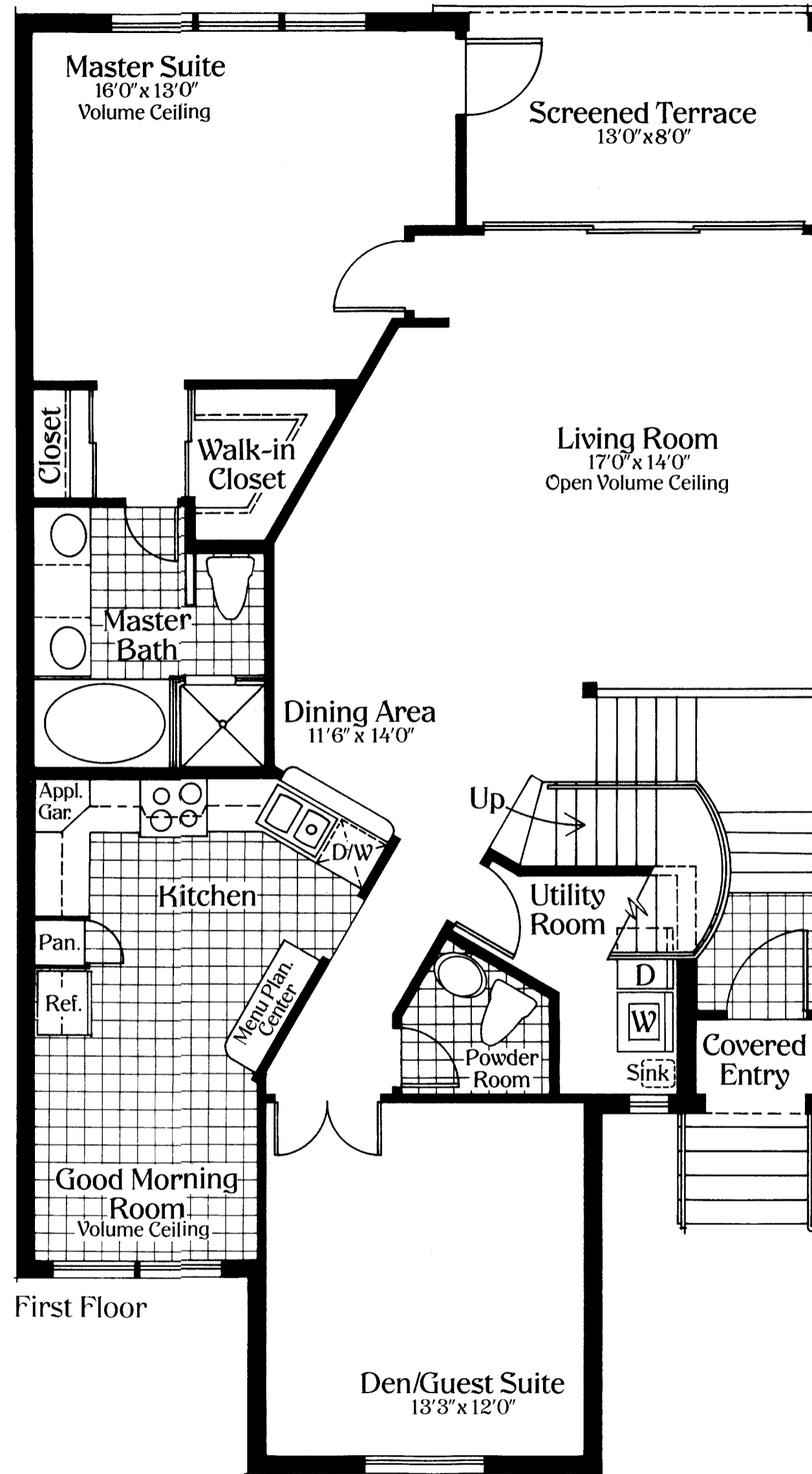
- Oversized shower.
- European vanities with cultured marble tops.
- Studio lights over vanities.
- Double sinks in Master Bath.
- Contemporary glass shower enclosure.
- Ceramic tile floors.

Your community

- Dramatic, private entry bridge with picturesque gatehouse.
- Lush, tropical landscaping throughout the community.
- Exclusive recreational area with Bath House.
- Heated swimming pool with separate Spa.
- Large, scenic lake with fountain.

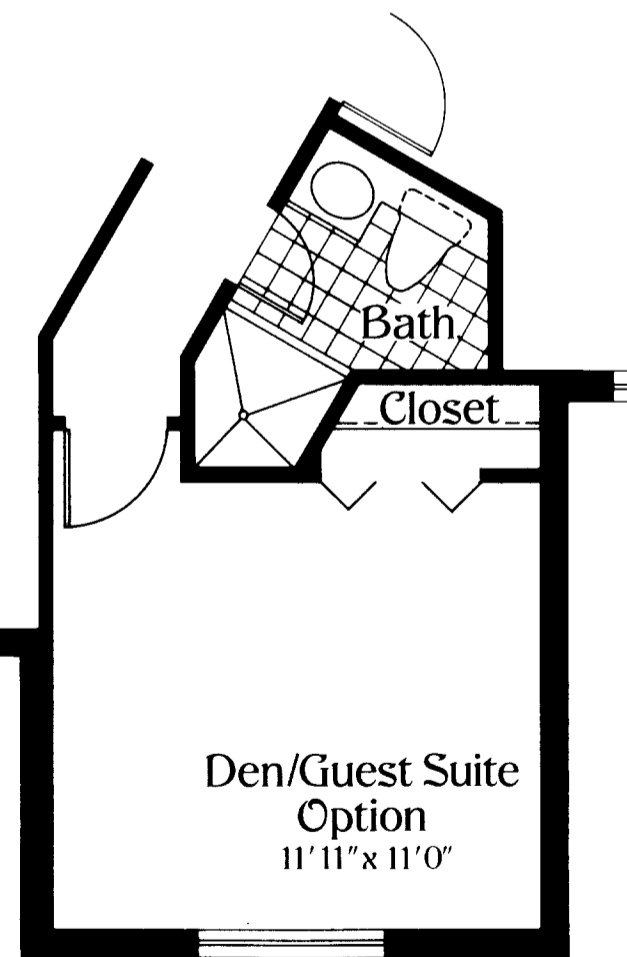
Pelican Bay

- 27-hole championship golf course designed by Arthur Hills.
- Private country club pleasures at *The Club* including casual and formal dining, an active social calendar, plus Pro Shop and more.
- Three miles of private, white sandy beaches just a short walk from Avalon.
- Hundreds of acres of preservation area with paths for bicycle riding and jogging, and nature trails for quiet strolls.
- Celebrity entertainment and preeminent cultural events at the new Philharmonic Center For The Arts, featuring world-class music, opera, ballet and art.



THE CAMELOT

Air-Conditioned Living Area	1,795 Sq. Ft.
Terrace	101 Sq. Ft.
Entry	19 Sq. Ft.
Total Area	1,915 Sq. Ft.



ORAL REPRESENTATIONS CANNOT BE RELIED UPON AS CORRECTLY STATING REPRESENTATIONS OF THE DEVELOPER. FOR CORRECT REPRESENTATIONS, MAKE REFERENCE TO THIS BROCHURE AND TO THE DOCUMENTS REQUIRED BY SECTION 718.503, FLORIDA STATUTES, TO BE FURNISHED BY A DEVELOPER TO A BUYER OR LESSEE.

Dimensions and specifications are approximate and subject to change without notice.