

Plan 05



Chateaumere

at Pelican Bay

This is the largest and most luxurious floor plan available at Chateaumere. It boasts 1,909 sq. ft. of living area, plus 452 sq. ft. of wrap-around screened terrace, and 90 sq. ft. of balcony. More than 2,450 sq. ft. of total area in all.

It comes with three bedrooms and three full baths (the master bath has a dressing room and two sinks), a spacious kitchen with pass-through and view, plenty of large closets, a separate laundry room, and optional wet bar.

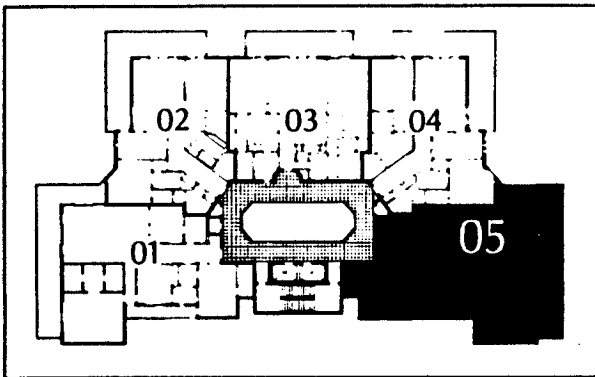
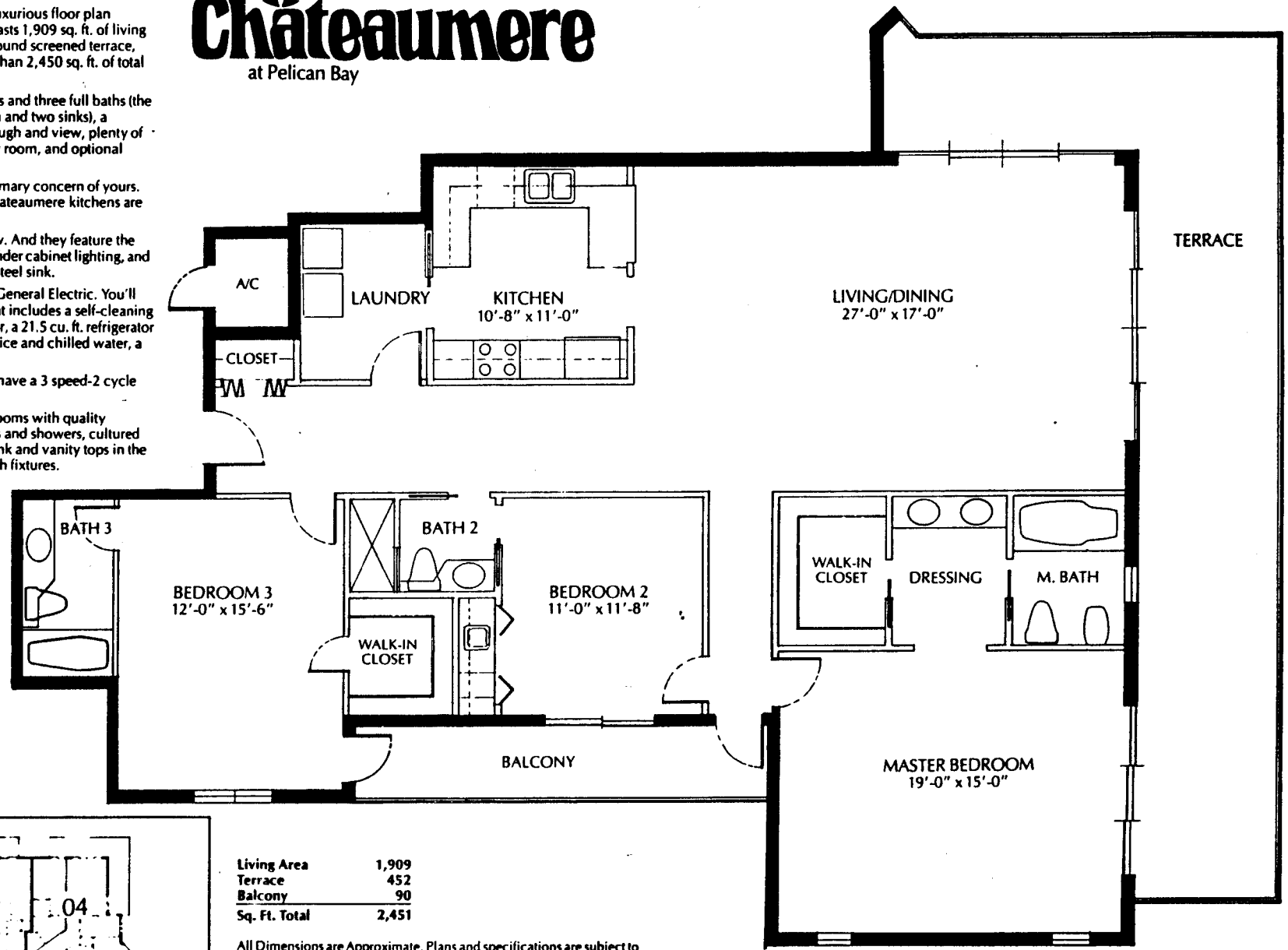
We know the kitchen is a primary concern of yours. So we've made sure that the Chateaumere kitchens are the finest.

All of them come with a view. And they feature the highest quality cabinets, with under cabinet lighting, and double compartment stainless steel sink.

The appliances? They're by General Electric. You'll have a range & double oven that includes a self-cleaning lower oven with black glass door, a 21.5 cu. ft. refrigerator with through-the-door crushed ice and chilled water, a dishwasher, and disposal.

In your laundry room you'll have a 3 speed-2 cycle washer, and a 3 cycle dryer.

We've also loaded the bathrooms with quality features. Like ceramic tile floors and showers, cultured marble tubs, cultured marble sink and vanity tops in the master baths, and decorator bath fixtures.



Living Area	1,909
Terrace	452
Balcony	90
Sq. Ft. Total	2,451

All Dimensions are Approximate. Plans and specifications are subject to change to permit use of finest and latest materials and design.